

# Graduate Education: Priorities & Initiatives

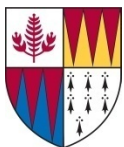
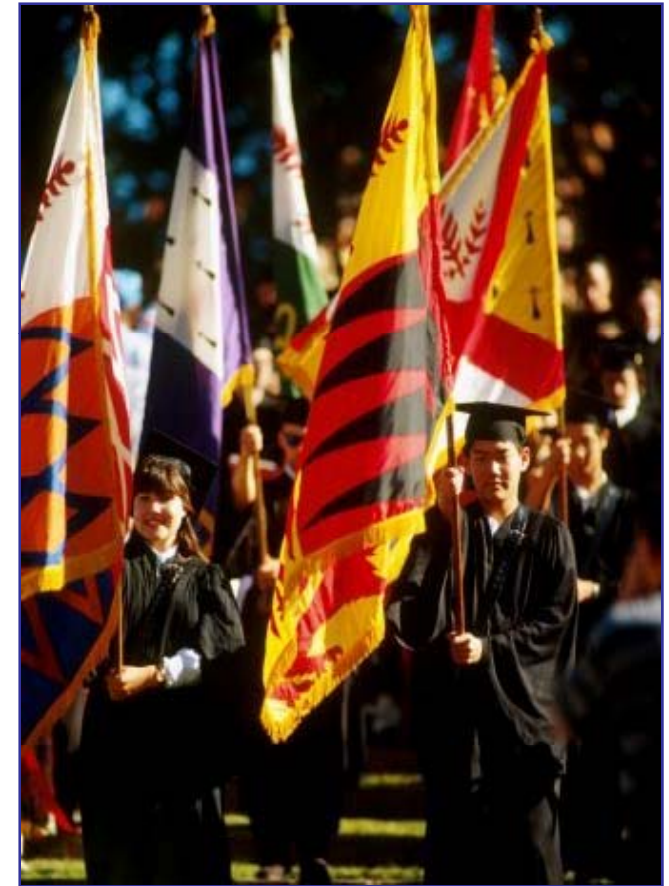
**Patricia J. Gumpert**

Vice Provost for Graduate Education

Stanford University

November 29, 2007

[Revised Nov 18, 2008]



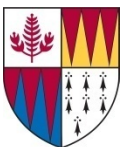
Office of the Vice Provost for Graduate Education

[vpge.stanford.edu](http://vpge.stanford.edu)

# Report of Stanford's Commission on Graduate Education

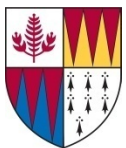


- **Build on strengths**
  - Academic excellence
  - Innovation & collaboration
- **Imagine new practices**
  - Interdisciplinarity
  - Leadership roles
  - Diversity
- **Create VPGE**



# Three VPGE Priorities

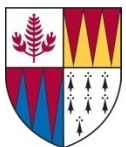
- **Advance Diversity**
- **Support Innovation**
- **Assist in Problem Solving**



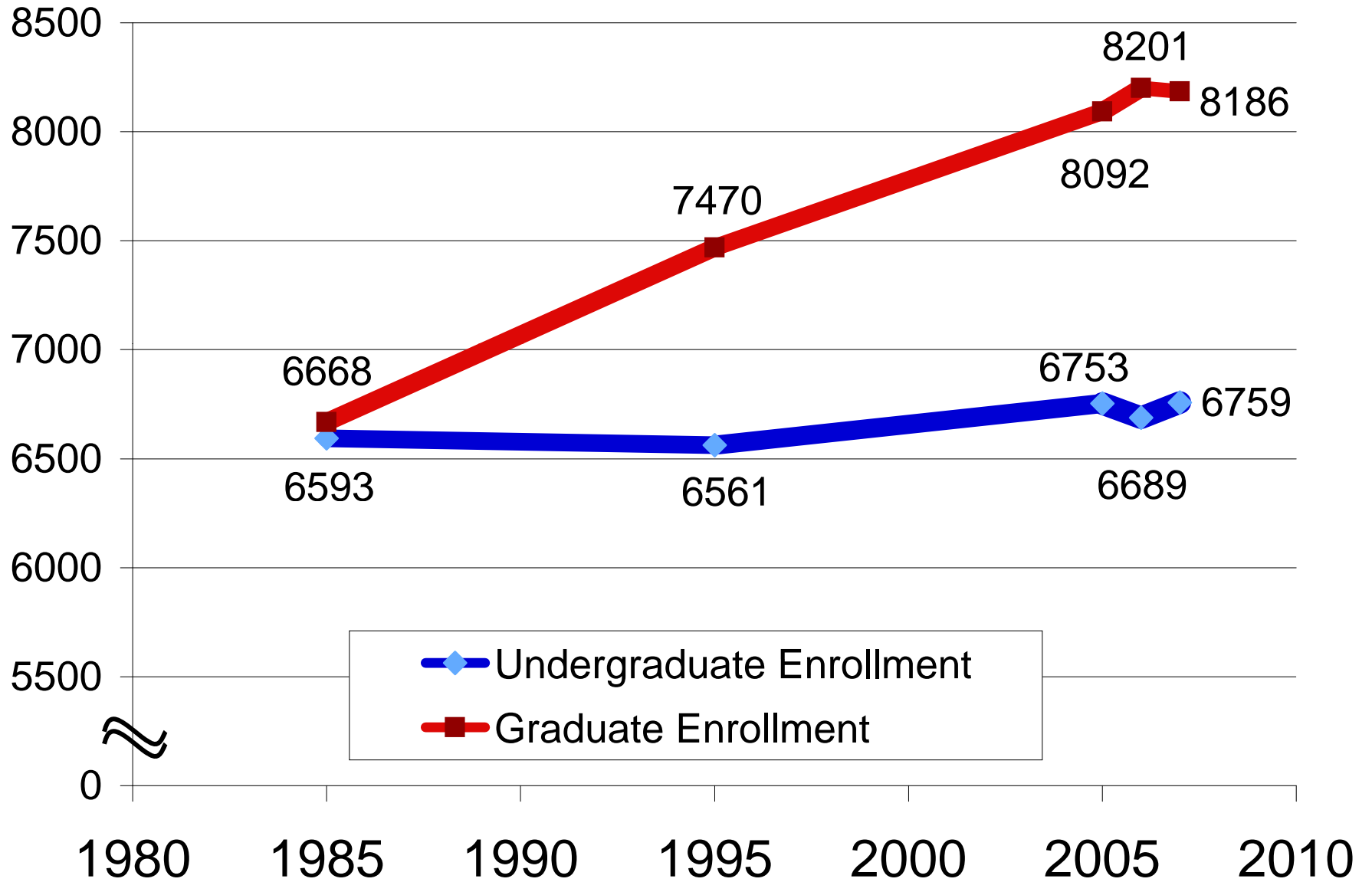
# Graduate Admissions 1985-2007

## Stanford is more popular & selective:

- Applications ↑ 62%
- Admit rate decreased to 13%
- Yield rate increased to 55%



# Stanford Enrollment 1985-2007



# Graduate Enrollment 1985-2007

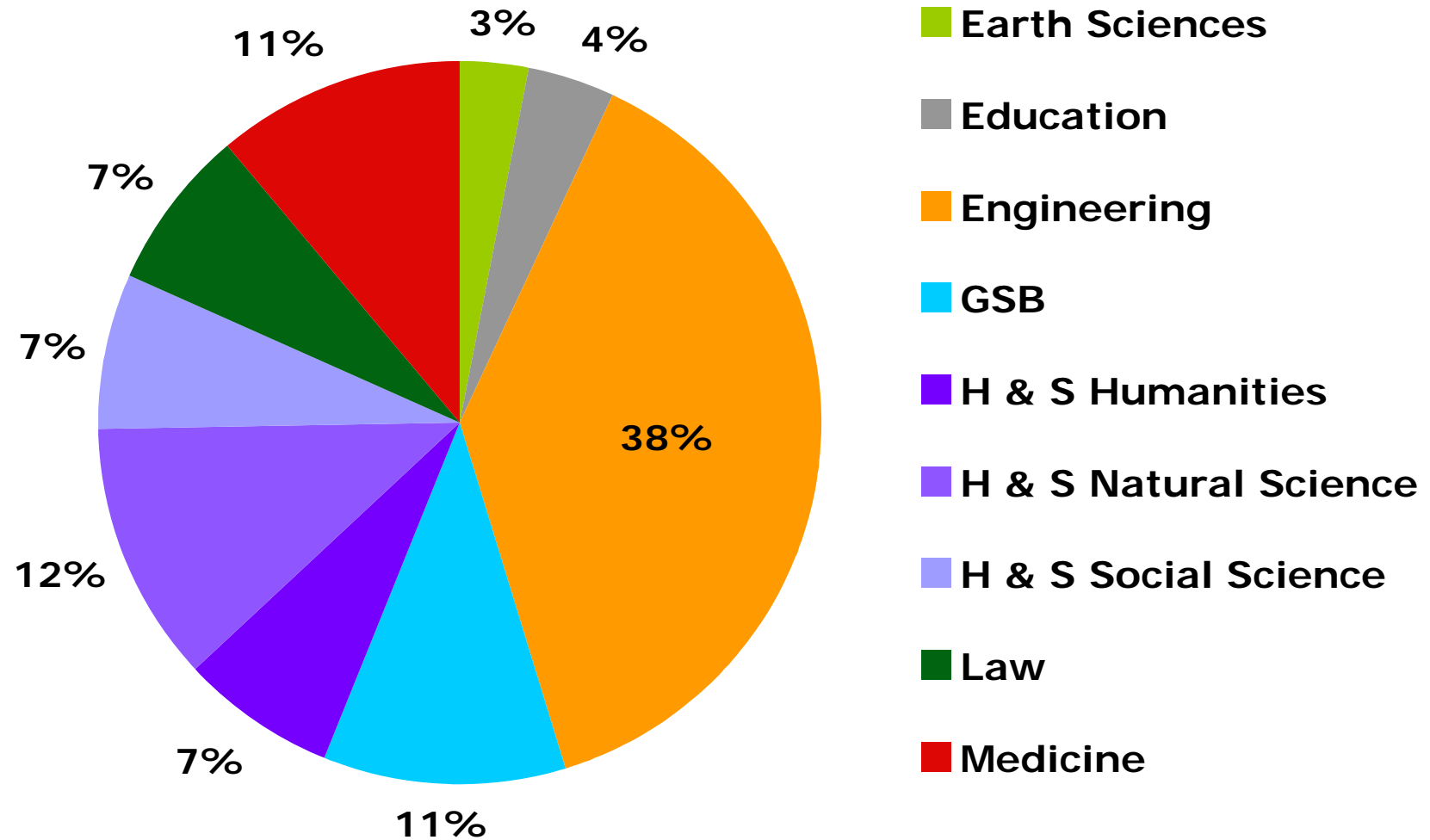
- **By degree level**

- Master's & PhD ↑ 28%
- Professional (MD, JD) ↑ 6%

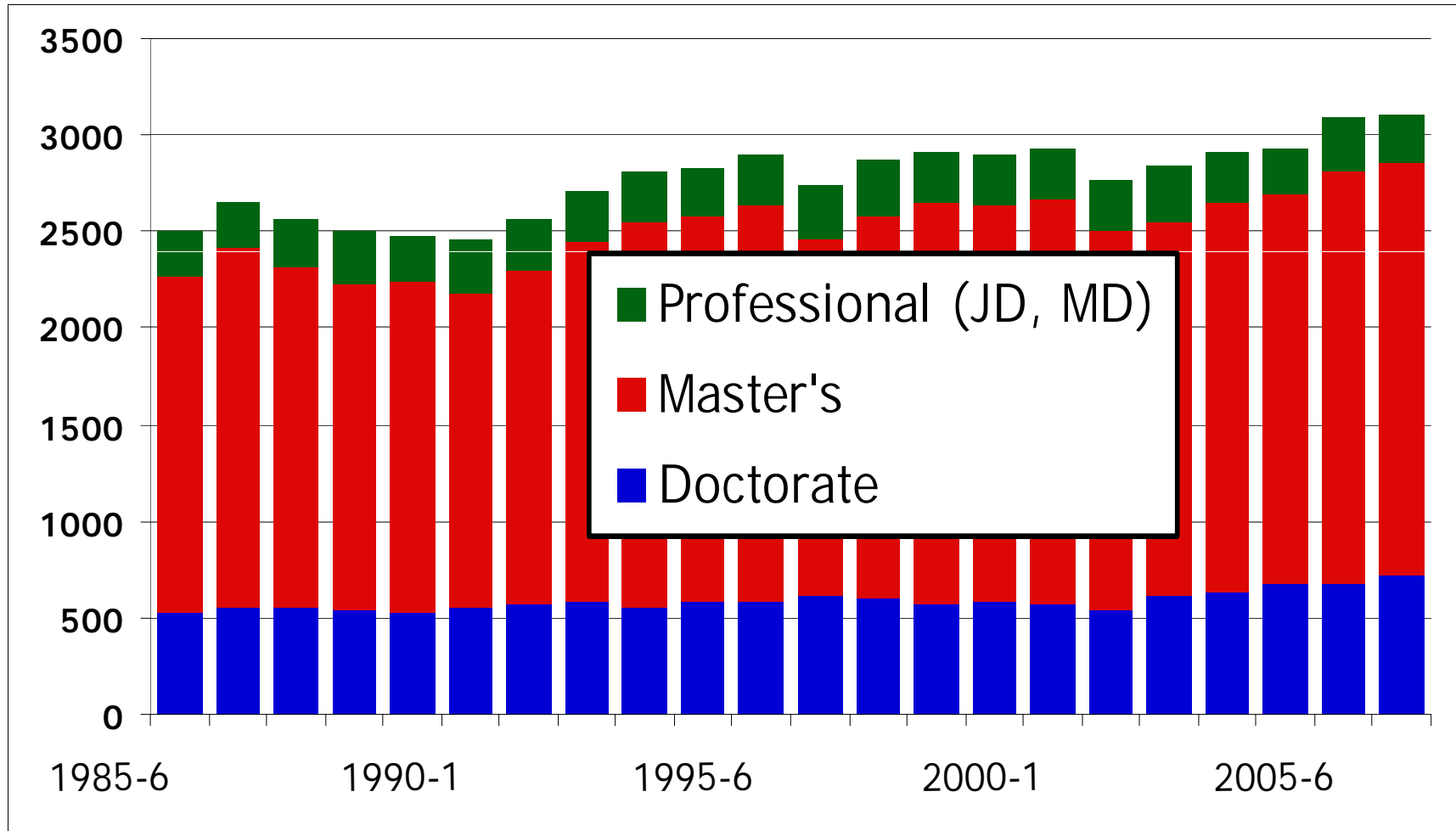
- **By school**

Medicine	↑ 69%	Law	↑ 14%
Engineering	↑ 31%	Earth Sci	↑ 4%
H & S	↑ 21%	Education	↓ 22%
GSB	↑ 19%		

# Graduate Enrollment 2007

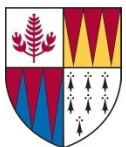


# Graduate Degrees 1985-2007

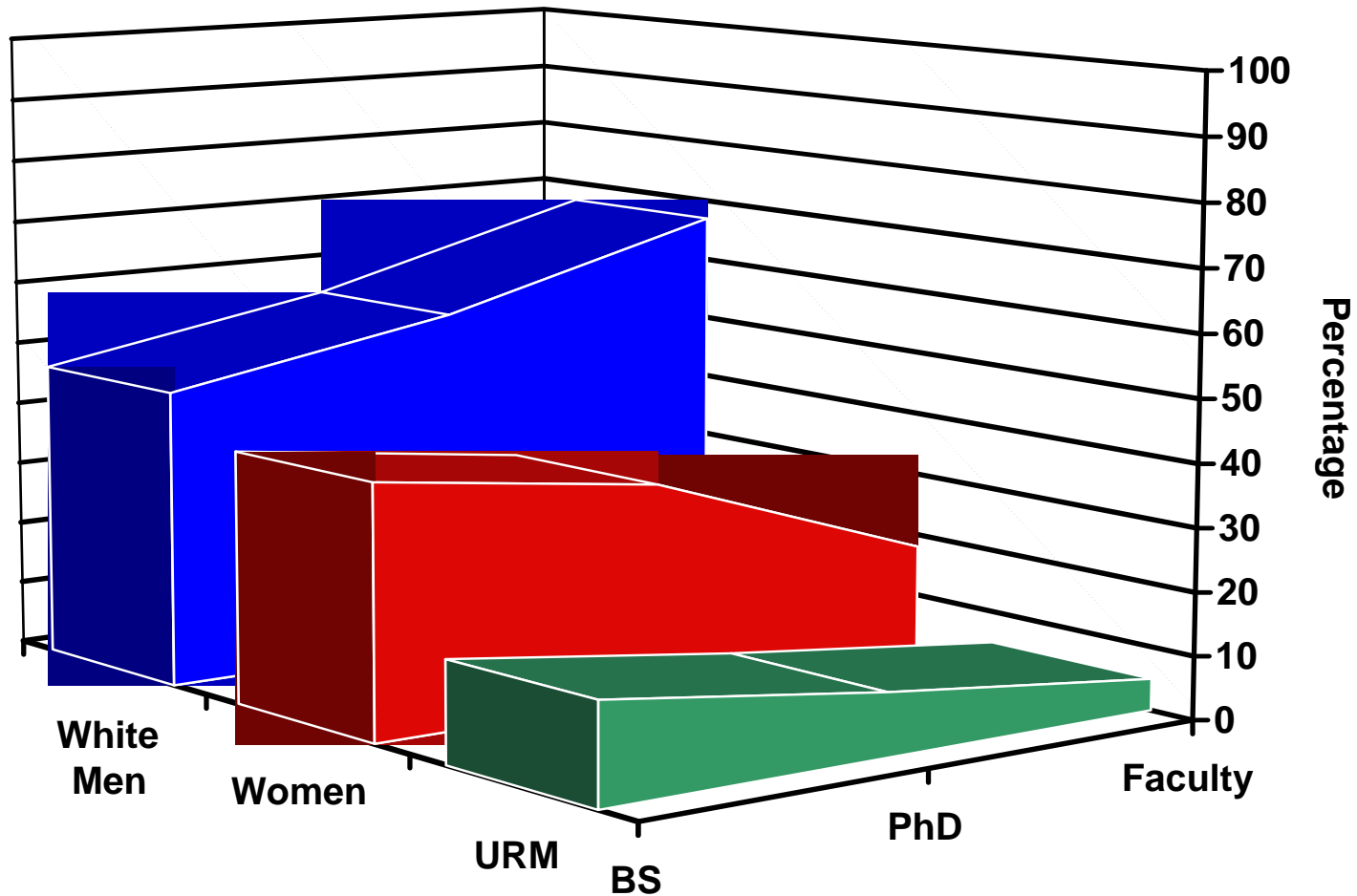


# Diversity: The Challenges

- **Diversity broadly defined**
- **Critical needs defined in context of academic field**
- **Update on two Stanford trends**
  - Women
  - Racial & ethnic diversity: focus on under-represented minorities (URM)



# Academic Pipeline



Source: Donna Nelson, *National Analysis of Minorities in Science and Engineering Faculties at Research Universities*. 2007

# 2006 Graduate Enrollment: Largest PhD Grantors

---

	Women	URM
University of Minnesota	52%	5%
University of Texas	48%	12%
UCLA	48%	13%
University of Illinois	47%	8%
UC - Berkeley	46%	11%
University of Michigan	45%	10%
<b>Stanford University*</b>	<b>36%</b>	<b>9%</b>

---

\* Stanford without School of Engineering      44% women      11% URM

# 2006 Graduate Enrollment: Private University Peers

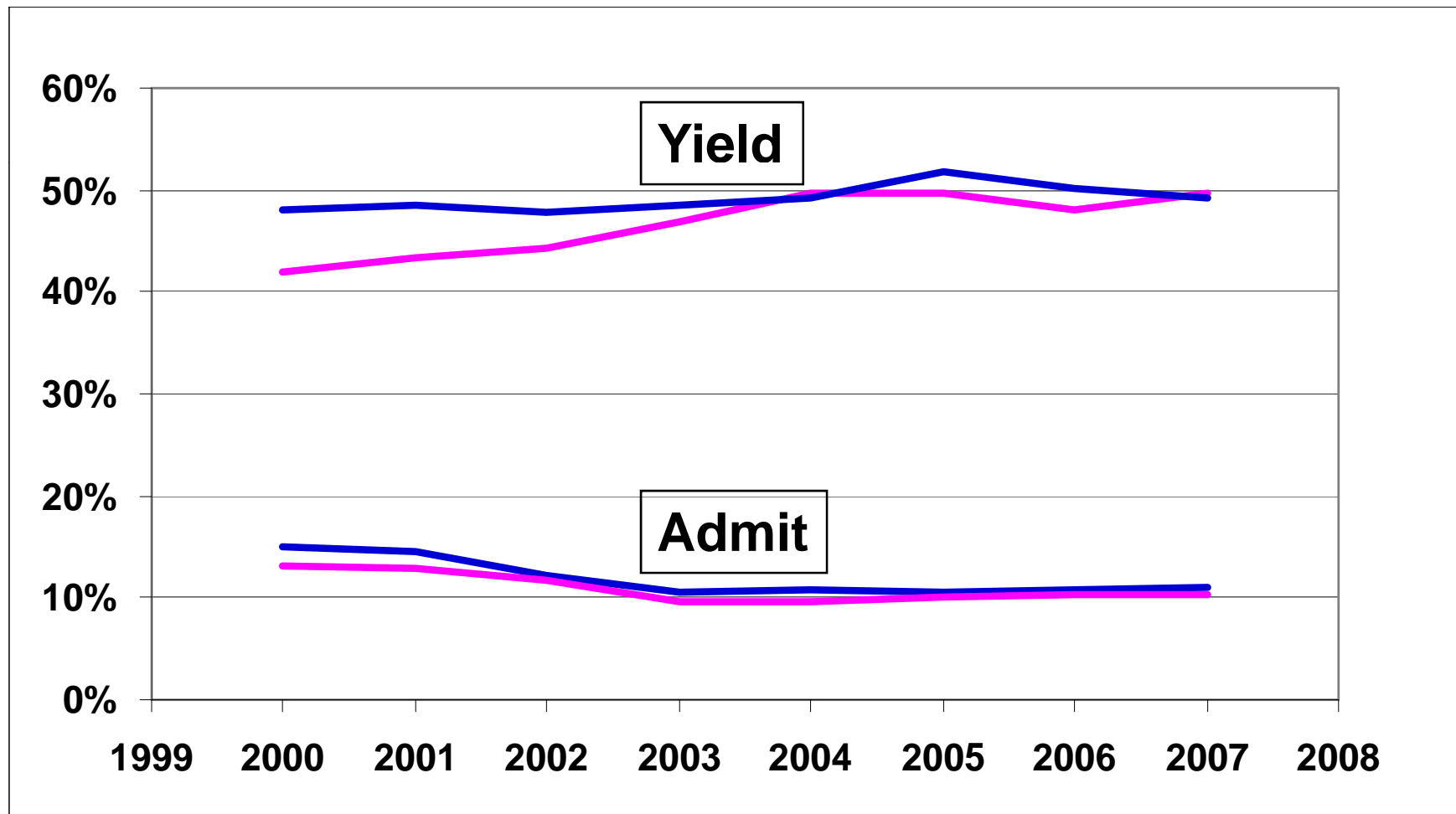
	Women	URM
Univ of Pennsylvania	52%	8%
Columbia University	51%	9%
Yale University	51%	8%
Harvard University	48%	10%
Cornell University	42%	7%
University of Chicago	41%	8%
<b>Stanford University*</b>	<b>36%</b>	<b>9%</b>
<b>M.I.T.</b>	<b>30%</b>	<b>5%</b>

\* Stanford without School of Engineering

44% women 11% URM

# Gender: Admit & Yield Rates Since 2000

Nearly identical for men & women



# Graduate Women Enrollment 2007

---

	<b>% Women</b>	<b>N</b>
<b>Education</b>	<b>69%</b>	<b>231</b>
<b>H &amp; S - Humanities</b>	<b>52%</b>	<b>296</b>
<b>H &amp; S - Social Sciences</b>	<b>49%</b>	<b>283</b>
<b>Medicine</b>	<b>48%</b>	<b>440</b>
<b>Law</b>	<b>46%</b>	<b>283</b>
<b>Earth Sciences</b>	<b>43%</b>	<b>105</b>
<b>Business</b>	<b>34%</b>	<b>301</b>
<b>H &amp; S - Natural Sciences</b>	<b>31%</b>	<b>291</b>
<b>Engineering</b>	<b>23%</b>	<b>712</b>

---

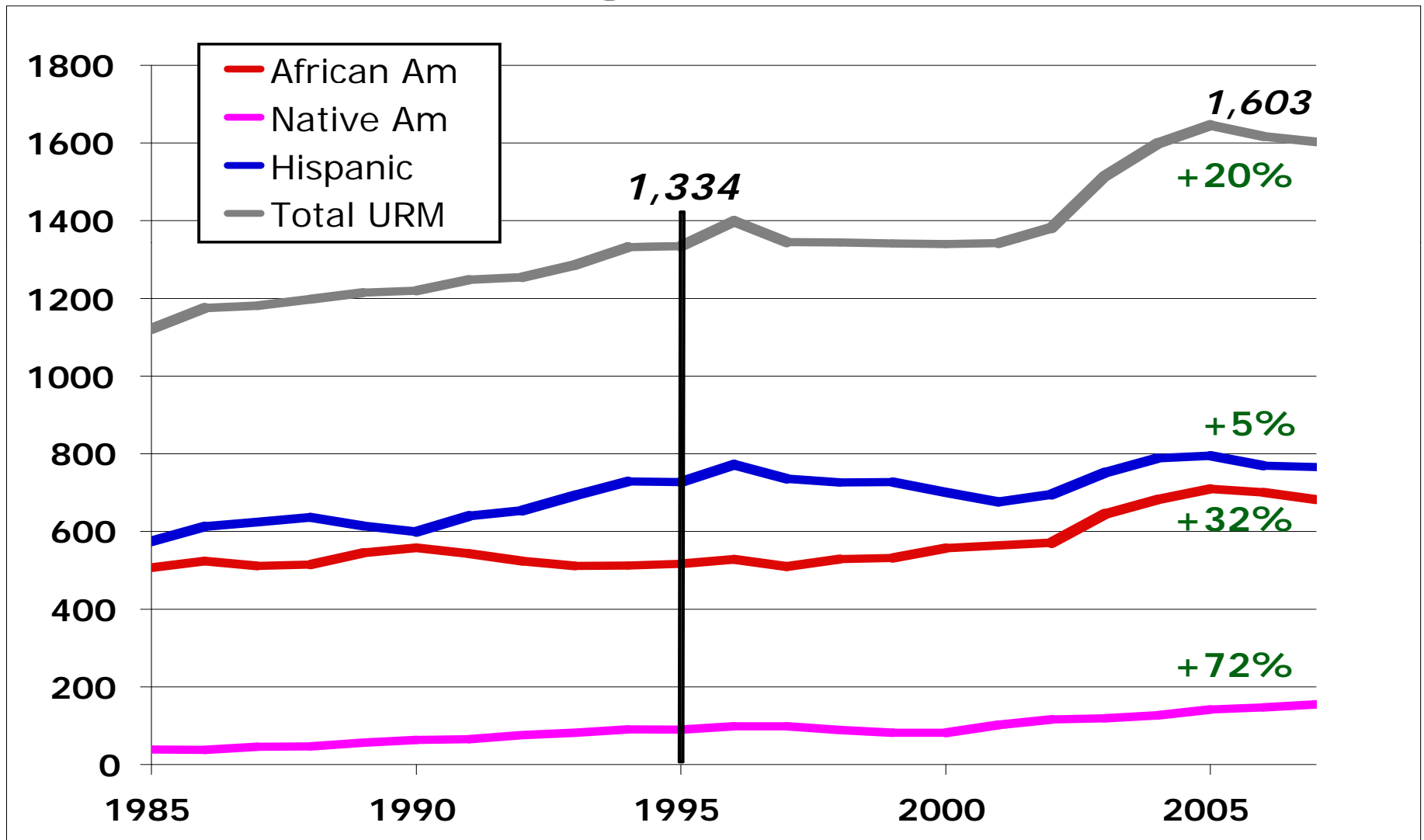
# Ph.D.s Awarded to Women 2007

---

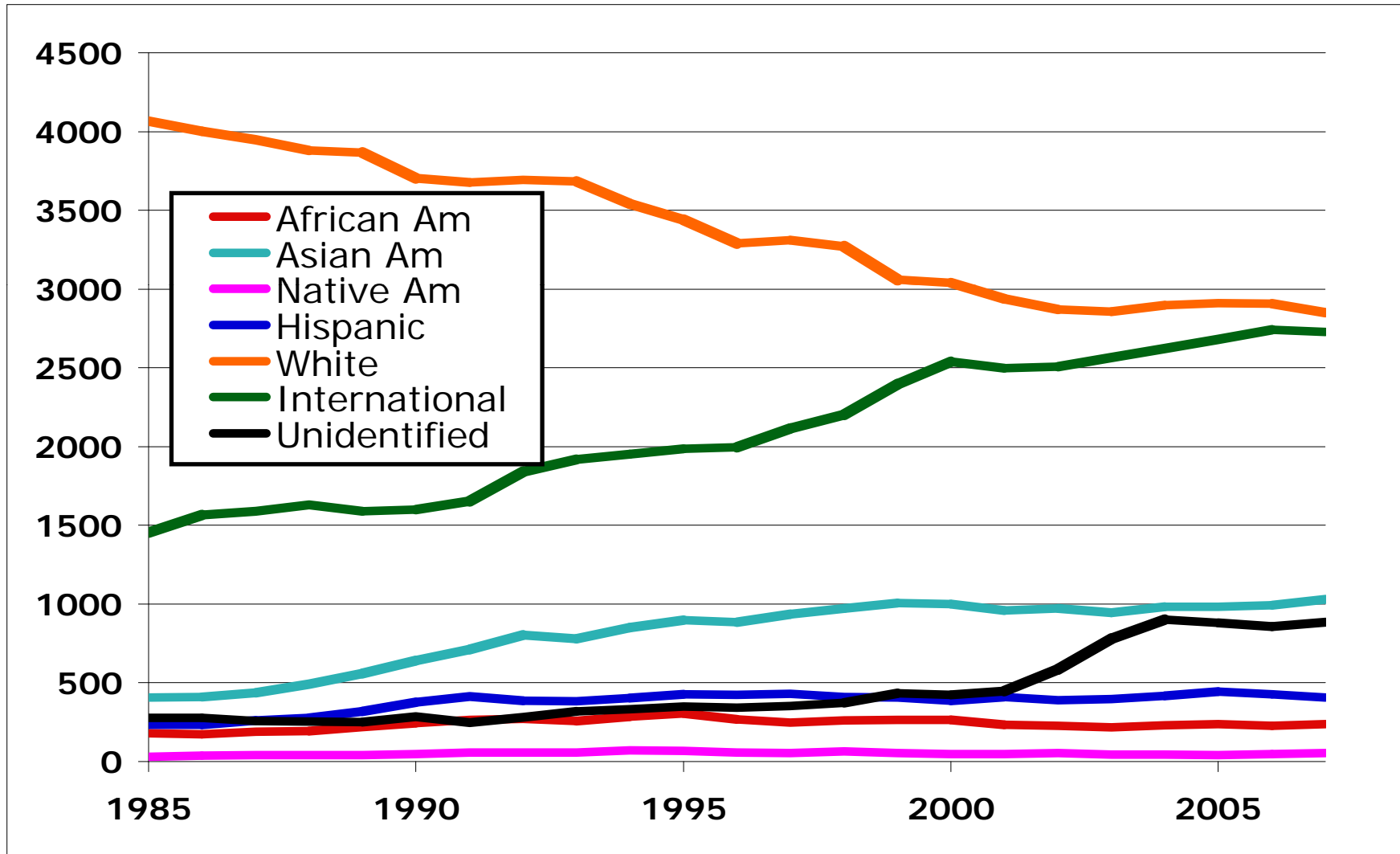
	<b>% Women</b>	<b>N</b>
<b>Education</b>	<b>77%</b>	<b>20</b>
<b>Medicine</b>	<b>54%</b>	<b>30</b>
<b>H &amp; S - Humanities</b>	<b>53%</b>	<b>39</b>
<b>Law</b>	<b>48%</b>	<b>19</b>
<b>H &amp; S - Social Sciences</b>	<b>44%</b>	<b>31</b>
<b>Earth Sciences</b>	<b>42%</b>	<b>16</b>
<b>H &amp; S - Natural Sciences</b>	<b>31%</b>	<b>40</b>
<b>Business</b>	<b>18%</b>	<b>4</b>
<b>Engineering</b>	<b>14%</b>	<b>38</b>

---

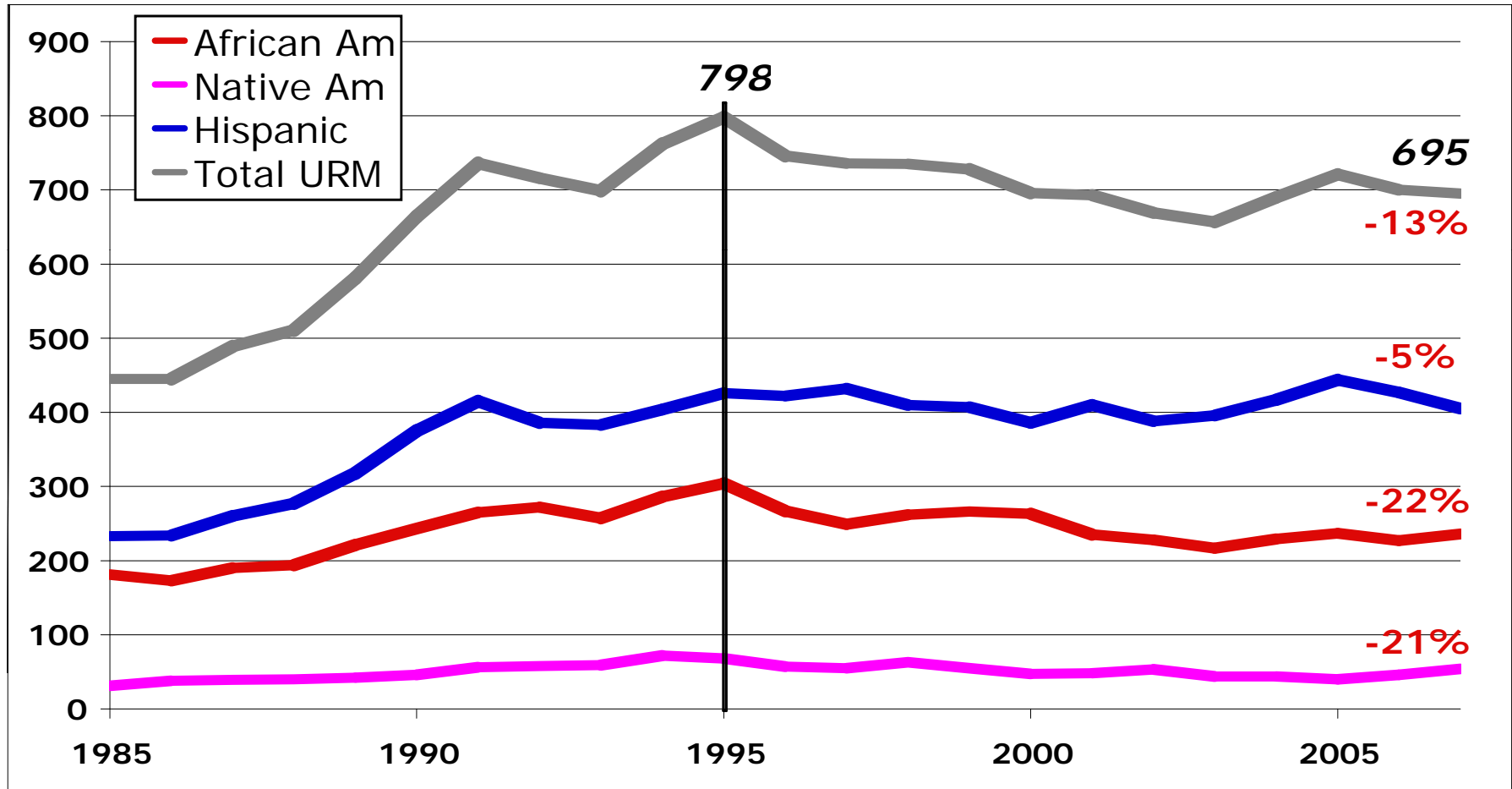
# Undergraduate URM Enrollment Change 1995-2007



# Graduate Enrollment by Ethnicity 1985-2007



# Graduate URM Enrollment Change 1995-2007



# Stanford Enrollments by URM

	2007 Undergraduate			2007 Graduate		
	N	%	Change 1995-07	N	%	Change 1995-07
<b>Total</b>	<b>6,689</b>	<b>100%</b>	<b>+ 2%</b>	<b>8,186</b>	<b>100%</b>	<b>+ 10%</b>
<b>All URM</b>	<b>1,603</b>	<b>24%</b>	<b>+ 20%</b>	<b>695</b>	<b>8.5%</b>	<b>- 13%</b>
<b>African American</b>	<b>682</b>	<b>10%</b>	<b>+ 32%</b>	<b>236</b>	<b>3.6%</b>	<b>- 22%</b>
<b>Hispanic</b>	<b>766</b>	<b>11%</b>	<b>+ 5%</b>	<b>405</b>	<b>6.1%</b>	<b>- 5%</b>
<b>Native American</b>	<b>155</b>	<b>2%</b>	<b>+ 72%</b>	<b>54</b>	<b>0.8%</b>	<b>- 21%</b>

# Graduate URM Enrollment 2007

---

	<b>% URM</b>	<b>N</b>
<b>Education</b>	<b>21%</b>	<b>71</b>
<b>Law</b>	<b>18%</b>	<b>105</b>
<b>Medicine</b>	<b>16%</b>	<b>146</b>
<b>H &amp; S - Humanities</b>	<b>11%</b>	<b>61</b>
<b>Business</b>	<b>9%</b>	<b>81</b>
<b>H &amp; S - Social Sciences</b>	<b>9%</b>	<b>52</b>
<b>H &amp; S - Natural Sciences</b>	<b>5%</b>	<b>48</b>
<b>Engineering</b>	<b>4%</b>	<b>124</b>
<b>Earth Sciences</b>	<b>3%</b>	<b>7</b>

---

# Ph.D.s Awarded to URM 2007

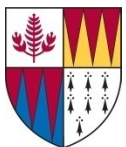
---

	<b>% URM</b>	<b>N</b>
<b>Education</b>	<b>27%</b>	<b>7</b>
<b>H &amp; S - Humanities</b>	<b>16%</b>	<b>12</b>
<b>H &amp; S - Social Sciences</b>	<b>14%</b>	<b>10</b>
<b>Medicine</b>	<b>9%</b>	<b>5</b>
<b>Engineering</b>	<b>6%</b>	<b>15</b>
<b>H &amp; S - Natural Sciences</b>	<b>5%</b>	<b>7</b>
<b>Law (J.S.D.)</b>	<b>3%</b>	<b>1</b>
<b>Business</b>	<b>0%</b>	<b>0</b>
<b>Earth Sciences</b>	<b>0%</b>	<b>0</b>

---

# VPGE Diversity Initiatives

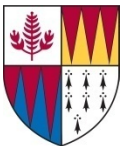
- **Commitment to diversity, broadly defined**
- **Recruitment, adding to school initiatives**
  - Campus visits: STANDOUT & G-RADD; Travel
  - Comparative Studies in Race and Ethnicity (CSRE) Graduate Fellowships
- **Retention**
  - Funds to student groups & departments
  - Dissertation research funds
  - Science & Engineering bridge funds
- **Promoting academic careers**



# **DARE** Fellowship Program

**D**iversifying **A**cademia, **R**ecruiting **E**xcellence

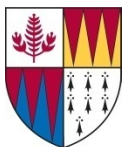
- Competitive two-year dissertation fellowships
- Commitment to diversity, broadly defined
- Cultivate skills, confidence, mentoring networks
- Diversify the pipeline
  - Prepare as future faculty
  - Mentoring by senior faculty
  - Promote diversity
- Acting Assistant Professorships



# Interdisciplinarity at Stanford

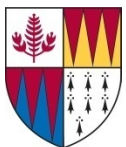
## Increased momentum:

- **Independent Labs (Dean of Research)**  
1997: 8 → 2007: 16
- **Graduate Joint Degree Programs**  
2003: 2 → 2007: 21
- **Undergraduate Education**



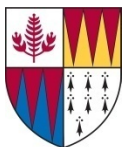
# **VPGE Support & Problem Solving: Interdisciplinarity**

- **Stanford Interdisciplinary Graduate Fellowships (SIGF) Program**
- **Stanford Graduate Summer Institute**  
([sgsi.stanford.edu](http://sgsi.stanford.edu))
- **Outward-facing courses**
- **Workshops for communications & leadership skills**



# VPGE Support & Problem Solving: Graduate Programs

- **Senate's Committee on Graduate Studies (C-GS)**
- **Faculty Directors of Graduate Studies**
- **Strengthening the Core (SCORE) innovation funds**
- **Tuition shortfalls (i.e., NIH training grants, NSF graduate fellowships)**



# Jane L. Stanford: Letter to Trustees 1904



“Let us not be afraid to outgrow old thoughts and ways, and dare to think on new lines as to the future work under our care. Let us not be poor copies of other universities. Let us be progressive.”

